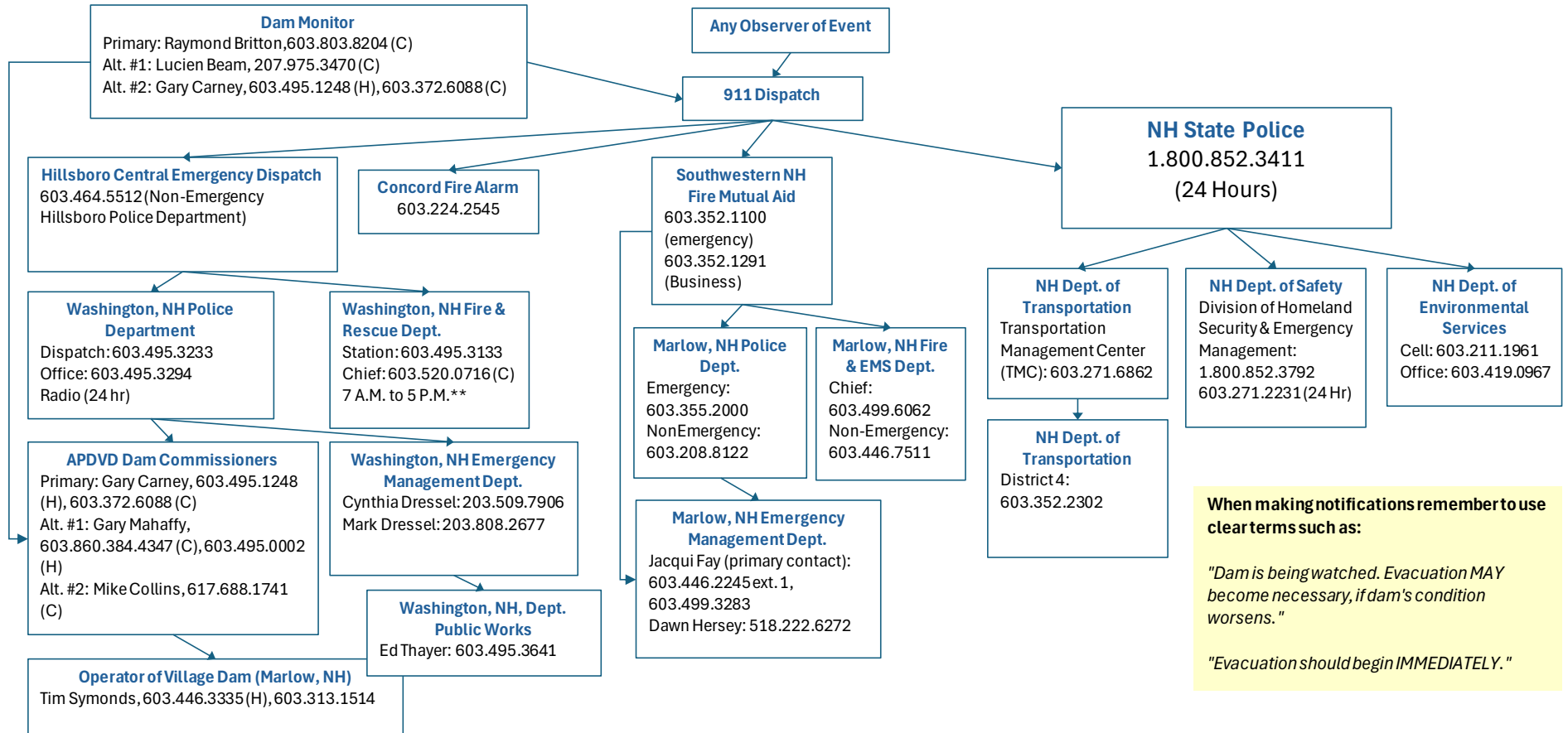


Ashtuelot Pond Dam Village District (APDVD) High, Dam # D245005

Washington, NH 03280

Section 1 - Emergency Action Plan (EAP) Notification Flow Chart

October 2025



For assistance with contact information for local municipal officials and NH Highway Districts, see:

<https://mm.nh.gov/files/uploads/dot/remote-docs/nh-officials-directory.pdf>

<https://www.dot.nh.gov/about-nh-dot/divisions-bureaus-districts/highway-maintenance>

** Concord Fire Alarm, 603.224.2545, can page officer after hours